

# JID New Submission Checklist



To facilitate the review of your submission, ensure it includes the following items.

Detail on all items below as well as JID's editorial policies can be found in our [Information for Authors](#).



## Author Information Required

- Each author's name, email address, and institution
- [ORCID](#)s for first and corresponding authors
- [CRediT](#) Contribution Statement in the following format:  
*Conceptualization: AB, BC; Formal Analysis: BC, CD; Writing – original draft: AB, BC, CD.*
- [Conflict of Interest Statement](#)



## Study Information Required

- [Data Availability Statement](#).
- [If reporting on Human subjects](#), each should have provided “written, informed consent”; if not, explain why in the text. If reporting on children, the parent or guardian should have provided the consent; be sure this is stated clearly.
- [Approving institution's name](#) for all human and animal studies; if approvals were waived by the institution's Institutional Review Board or Research Ethics Committee, explain why in the text.
- Need help? Try [this ethics statement generator](#).
- [CONSORT](#) compliance for reports of Randomized Controlled Trials.
- [Acknowledgements](#) should include information about the funding of the research and the involvement of the funder in the study.



## Forms Required

- [Conflict of Interest and Authorship Declaration form](#) is required for publication; the corresponding author will be asked to complete this on behalf of all authors; a link to this form will be emailed -on submission.
- [License to Publish form](#) is required for publication; a link to this form will be emailed to the corresponding author on submission.



## Style & Files Guidance

- **General Guidance for all Submissions**
  - [A single .pdf](#) of the manuscript text and display items may be submitted. (Supplementary materials should be submitted separately.)
  - [Manuscript text](#) should be a .doc/.docx file (if not submitting a .pdf).
  - [Word Counts](#) exclude references, figure legends, tables, and supplemental data.
  - [Figures and Tables](#) should be cited in order in the text.
  - [References](#) should be in JID style (Author, year); see [details](#).



- Figure permissions – If reprinting figures from another publication, upload the permissions to do so as a “supporting document”. Include a permissions statement with a reference to the reprinted material in the figure legend (e.g., “Reprinted from Smith et al, 2002 with permission from Elsevier”).

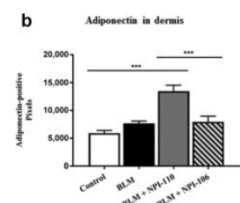


### Style & Files (Continued)

- Figure captions - Help the reviewers by entering the Figure #, title, and legend with each of your image files in the caption box. See full [instructions](#) on how to add this information. For images saved as .pptx and .pdf files enter the Figure #, title, and legend within each of your image files (.pptx and .pdf), below the image. See full [instructions](#).
- **Original Articles** follow this format:  
Title Page, Abstract, Introduction, Results, Discussion, Materials and Methods, Data Availability Statement, Conflict of Interest Statement, Acknowledgments, Credit Statement (author contributions), References, Tables, Figure Legends.
- **Letters to the Editor** follow this format:  
Title Page, Letter Text, Data Availability Statement (if applicable), Conflict of Interest Statement, Acknowledgments, Credit Statement (author contributions), References (maximum of 10), Tables, Figure Legends.  
*Max 1000 words / 2 display items*
- **For Other Article Types**  
Refer to the [Information for Authors](#).

### Figure Guidance

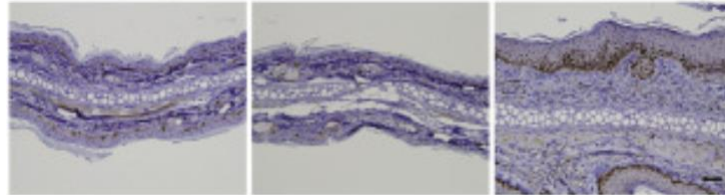
- Overall title – A brief overall title that does not refer to individual panels (see bold red text below) should be followed by a detailed legend.  
**Figure 2. Amplification of autoreactive T cells in KA/KA skins.** (a) Flow cytometric analysis of T cells with TCR Vβ5.1+ antibody, gated at CD4, in the skin of WT and kinase-dead Ikka knockin (KA/KA) mice at 4 months of age (n = 3/group). (b) Data from (a), represented by mean ± SEM (three repeats)...
- 300 dpi image files are required if the manuscript is accepted for publication. Acceptable file formats include .eps, .tif, .jpg, .pdf, .pptx; be prepared to supply these.
- Label panels in lower case and present them in the white space above and to the left of each image (see examples below).
- Bar graphs should use three solid colors - white, gray, and black; on any additional bars a pattern (dots, checks, etc.) or color should be used (not shades of gray).
- [Rossner & Yamada](#) provide general guidance on properly presenting data in figures. Figures will undergo the checks outlined in this article.



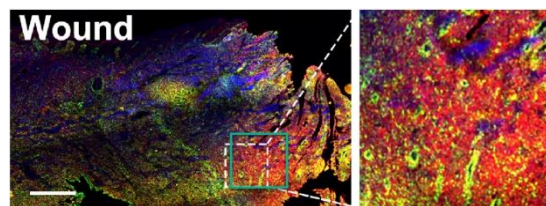


## Figures (continued)

- Brightness and contrast adjustments to images should be made sparingly and must be noted in the figure legend. No adjustments may be made to obscure or eliminate information present in the original.
- Photomicrograph panels should be separated by white space or a solid black line; use a bar to indicate magnification.

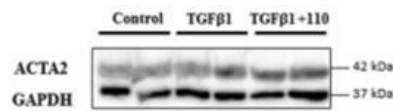


- Inset image boxes should be placed to match the magnified image. The below example is incorrect, **the green box shows the correct placement.**

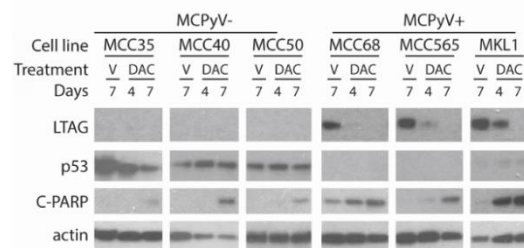


- Data from multiple gels may not be combined. Removing a complete lane from a gel and splicing the remaining lanes is allowable, but this should be clearly noted by the appearance of white space or a separating line. If you are presenting non-contiguous blots, white space or a solid black line should be used to indicate they are separate images. For detail see [Rossner and Yamada](#) (see especially the section “Splicing lanes together”).

Example: single gel, no splicing



Example: single gel, proper presentation of non-contiguous rows and lanes





### **Submit Your Manuscript**

- SUBMIT your manuscript at JID's submission site: <http://mc.manuscriptcentral.com/jid>.
- CHECK that the .pdf displays your submitted files as expected. This is what most reviewers and editors will view.
- \$50 SUBMISSION FEE is charged for all unsolicited submissions; payments are made via PayPal.