

# JID Revision Checklist



To facilitate a favorable review of your revised submission, and to avoid unnecessary delays if your manuscript is accepted for publication, please ensure it includes the following.

Detail on all items below can be found in our [Information for Authors](#).



## Author Information

- [ORCiDs](https://ORCID.org) for all authors <https://ORCID.org>.
- [CRediT](#) Contribution Statement in the following format:  
*Conceptualization: AB, BC; Formal Analysis: BC, CD; Writing – original draft: AB, BC, CD.*
- [Conflict of Interest Statement](#).
- Only one corresponding author may be listed.
- Any changes to authorship must include an [Author Change Letter](#).



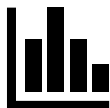
## Study Information

- Data Availability Statement is required.
- If reporting on human subjects, each should have provided “written, informed consent”; if not, explain why in the text. If reporting on children, the parent or guardian should have provided the consent; be sure this is stated clearly.
- Include the name of the approving institution for all human and animal studies; if approvals were not required, explain why in the text.



## Forms

- [Author forms](#) are required for publication; avoid delays by encouraging all authors to complete the author form found in their author center at <https://mc.manuscriptcentral.com/jid>.
- A [License to Publish form](#) should be completed by the corresponding author only; this can be found in the corresponding author’s author center at <https://mc.manuscriptcentral.com/jid>.



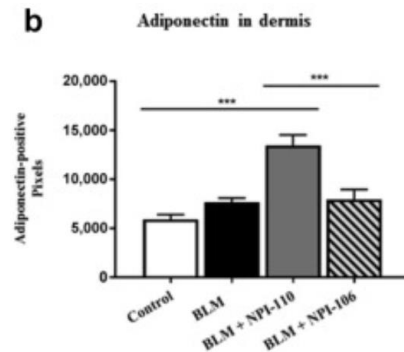
## Figures

- An overall title for each figure that does not refer to individual panels.  
**Figure 2. Amplification of autoreactive T cells in KA/KA skins.** (a) Flow cytometric analysis of T cells with TCR Vβ5.1+ antibody, gated at CD4, in the skin of WT and kinase-dead Ikkα knockin (KA/KA) mice at 4 months of age (n = 3/group). (b) Data from (a), represented by mean ± SEM (three repeats)...
- Be prepared to supply 300 dpi image files if the manuscript is accepted for publication. Acceptable file formats include .eps, .tif, .jpg, .pdf, .pptx
- Figure panels labelled in lower case and presented in the white space above and to the left of each image (see examples below).

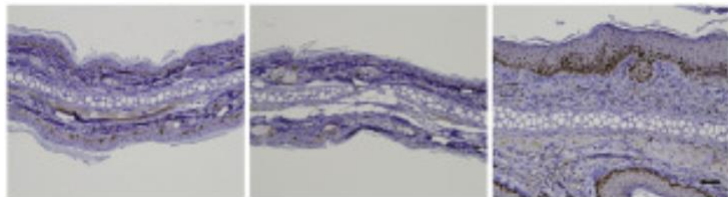


### Figures (continued)

- For bar graphs, use three solid colors - white, gray, and black; a pattern (dots, checks, etc.) or color should be used on any additional bars.



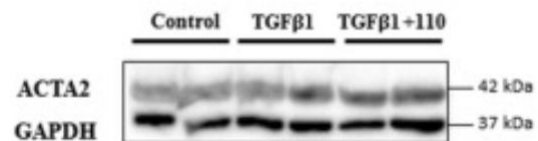
- For general guidance on properly presenting data in figures, see the article by [Rossner & Yamada](#). Figures will undergo the checks outlined in this article upon submission.
- Brightness and contrast adjustments to images should be made sparingly. No adjustments should be made to obscure or eliminate any information present in the original.
- Photomicrograph panels should be separated by white space or a solid black line; use a bar to indicate magnification.



- Data from multiple gels may not be combined. Removing a complete lane from a gel and splicing the remaining lanes is allowable, but this should be clearly noted by the appearance of white space or a separating line. For detail see [Rossner and Yamada](#) (see especially the section “Splicing lanes together”).

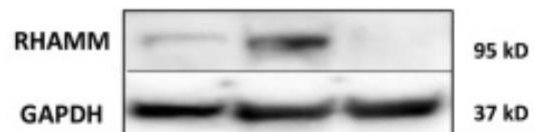
Example: single gel, no splicing

**c**



Example: single gel, proper splicing

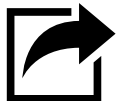
**d**





### **Style & Files**

- Track revisions in your revised manuscript & submit as a .doc/.docx file.
- Include a point-by-point response to the reviewers & editors as a .doc/.docx file.
- Organize Original Articles as follows:  
Title Page, Abstract, Introduction, Results, Discussion, Materials and Methods, Data Availability Statement, Conflict of Interest Statement, Acknowledgments, CRediT Statement (author contributions), References, Tables, Figure Legends. *Max 3500 words / 6 display items*
- Organize Letters to the Editor as follows:  
Title Page, Letter Text, Data Availability Statement (if applicable), Conflict of Interest Statement, Acknowledgments, CRediT Statement (author contributions), References, Tables, Figure Legends. *Max 1000 words / 2 display items*
- See the [instructions to authors](#) for all article word limits.
- Avoid claims of novelty for your work (“new”, “novel”, or “the first”).
- Figures and tables should be cited in order in the text.
- Refer to supplementary material as Figure S1, S2; Table S1, S2, etc.
- Present references in JID style (Author, year); see [details](#).
- If reprinting figures from another publication, upload the permissions to do so as a “supporting document”. Include a permissions statement with a reference to the reprinted material in the figure legend (e.g., “Reprinted from Smith et al, 2002 with permission from Elsevier”).
- Provide supplementary material that should be typeset as editable files (this will be charged at \$40/e-page); provide material that should NOT be typeset (including but not limited to large tables, movie files, etc.) as a single .pdf or in native file format. These will be charged at \$125/first file; \$75/each additional file.
- Name files using the manuscript number and type of material, using this convention (i.e., JID-2021-XXXX-text.doc, etc.).
- Please include only the latest set of files. If you have updated a file, please remove the original version and upload the revised file.



### **Submit Your Revised Manuscript**

- Check that the .pdf displays your submitted files as expected. This is what most reviewers and editors will view.
- SUBMIT your manuscript at JID’s submission site:  
<http://mc.manuscriptcentral.com/jid>.

Updated 23 September 2021